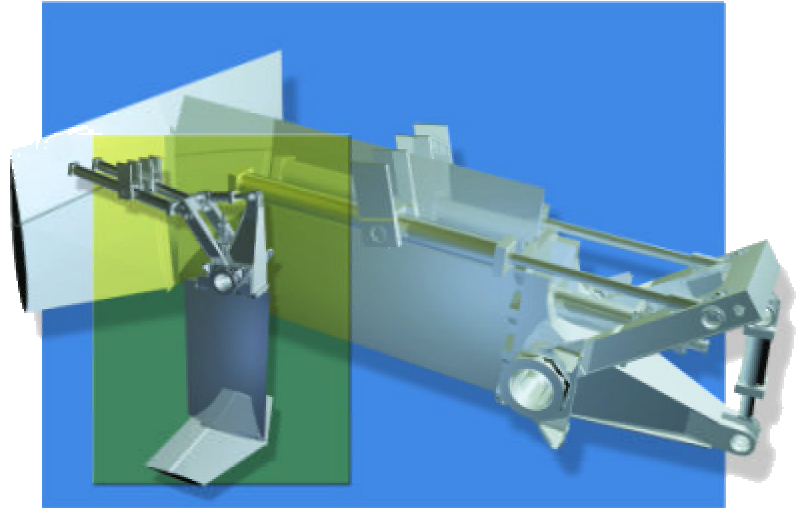


Maritime Dynamics, Inc.

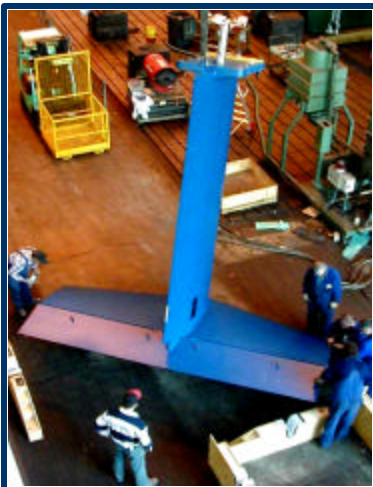
Retractable T-Foil

The MDI Retractable T-foil provides operational flexibility, reliability and lowers fuel consumption. The Retractable T-foil can greatly reduce motion sickness in higher sea states and provides the best performance in reducing pitch motion over a wider range of vessel operation.



In calm sea conditions or when not required, the Retractable T-foil combines safety and convenience through the ability to stow the T-foil, which increases the vessel's speed and reduces the risks of hitting submerged objects. This added benefit also reduces drag, resulting in fuel savings.

In addition, the system is fitted with hydraulic dampers, which allow the foil to pivot upwards in the event of hitting a floating object. Two hydraulic rams lower and raise the T-foil while a third pivots it to change the angle of incidence. Therefore, if the foil does strike an object while in use, it will immediately rotate clear of the impacted object.



The foil has a shape that will allow cavitation free operation well into the 45 knot speed range and features MDI's standard trailing edge flaps and inverted-T design.

A further advantage of the retractable T-foil results from reduced maintenance and operational problems because it is serviced while the vessel is afloat and all mechanical and hydraulic components are above the waterline.



Copyright © Maritime Dynamics, Inc. All rights reserved.

Maritime Dynamics, Inc.
21001 Great Mills Road
Lexington Park, Maryland 20653
1 301 863 5499 telephone
1 301 863 0254 fax
sales@maritimedynamics.com